



Darlington Drinker 180

FREE

Newsletter of the Darlington Campaign for Real Ale

Winter 2010/11

Cask Ale Grows Apace

DESPITE declining total beer sales and continuing pub closures, cask beer outperformed the beer market last year, increasing its share of on-trade beer sales and growing its customer numbers by 1.4%.

According to latest *Cask Report*, compiled by leading beer writer Pete Brown, cask beer, real ale:

**Grew 5% by value in 2009, to £1.4 billion, against a 2% decline in the total UK beer market;*

**Outperformed the total beer market in volume terms; and,*

**Now accounts for 15% of pub beer sales.*

Regional and local cask ale brewers recorded volume increases of 1% and 5% respectively, while the multi-national brewers, who have been abandoning traditional British beer in a dash for mass-market international lagers, saw their cask volumes fall by 11%.

An estimated 121,000 people started drinking cask beer during the year, taking the total number of cask drinkers to over 8.6 million. The number of 18-24 year old cask drinkers grew by 17%. Meanwhile, 3,000 more pubs started selling cask ale.

Pete Brown, said, "Considering everything else that was happening in the beer market, with continuing pub closures and consumers switching from on-trade to home consumption, it's hard to view this as anything other than a strong performance from cask ale."

"More interesting than the bald figures

The biggest Winter Ales Festival yet!



Over 200 Beers

Food, entertainment, low entry prices


Organised by CAMRA

Information: www.alefestival.org.uk

01727 867201


are the changing market dynamics and patterns of consumer behaviour. We've become more thoughtful about our purchases, looking for tradition, provenance and wholesomeness - all values that cask beer can provide in spades."

"Cask has an advantage in that, unlike almost every other drink, it can only be enjoyed in the pub rather than purchased more cheaply in the supermarket, but brewers and licensees still need to work at convincing consumers that a pint of cask beer is worth the detour."



THE QUAYS

REAL ALE
now being served!



*Anne and Peter would like to invite
customers old and new to sample our
changing range of cask ales from around
the country*


Homemade food served daily
***TAKING BOOKINGS FOR
CHRISTMAS PARTIES***
*Three Course Meal
ONLY £15.95
Choice of Menu*

SUNDAY LUNCHES
£5.95 (OAP / Child £3.95)

**Tel.
(01325)
461448**

**5 Tubwell Row, Darlington
just off the Market Square**

www.the-quas.info



Loosen That Tie

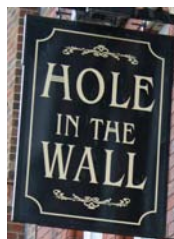
THE CAMPAIGN for Real Ale is to continue its campaign to reform the beer tie, despite an announcement by the Office of Fair Trading that it will take no action.

CAMRA says the inaction of the OFT, whose responsibility is to ensure markets work well for consumers, is all the more remarkable given that the Commons Business Select Committee and the government recognise that a competition problem exists.

Business Secretary Vince Cable has publicly stated that large pub companies are on probation and will face legislative action if they fail to reform by June 2011.

Mike Benner of CAMRA said: "The OFT's decision is based on a blinkered and selective consideration of the evidence. It recognised the concerns of tied pub landlords but failed to recognise the impact on consumers.

"The OFT's own analysis found that tied



The Hole in the Wall

Horsemarket,
Darlington

Tel. 01325 466720

An Ancient Hostelry in the Old Market Square

Real Ales:

Cameron Strongarm Ruby Red
Greene King Abbot
plus Black Sheep Best Bitter

Food Served:

Mon-Sat 12-2pm,
Tue, Wed, Thu & Sat 6-9pm

Opening hours: Mon-Thurs 11-11.30,
Fri & Sat 11-midnight; Sun 12-11

pub landlords on average pay around £20,000 more for their beer every year as a result of being tied and unable to purchase beer on the open market.

"CAMRA, unlike the OFT, recognises that higher costs imposed upon tied pub landlords will inevitably be passed onto consumers through higher prices, under-investment and pub closures."

Dr. Rick Muir of the independent Institute for Public Policy Research think-tank added: "IPPR research shows community pubs are not just places to drink, but also places where people meet friends and neighbours and where local clubs hold meetings and events.

"Community pubs are the embodiment of the 'Big Society' principle yet many risk being squeezed to death as a result of restricted competition. The OFT has failed to stand up for individual pub landlords and ultimately it will be consumers who suffer as yet more pubs close."



Darlington Drinker

....Twenty-Five Years Ago

"BRITAIN'S second largest brewing combine, Allied Breweries, is desperately fighting off a bid by the Australian owners of Fosters lager.

The Aussie firm, Elders IXL, is only a quarter the size of Allied yet is confident of success in a £1.8 billion deal.

Allied have six British breweries including Ansells, Ind Coope and - serving this area - Tetleys. They own 7,000 pubs, most of which sell real ale. Elders talk openly of 'brewery rationalisation'."

Darlington Drinker 40, December 1985



**The
Black Bull**
Great Smeaton
Tel. 01609 881219

*Paul & Lesley McConnell welcome you
to this XVI century coaching inn*

Three Cask Ales on tap

Open: Mon-Thur 5-11pm, Fri 3pm-late.
Sat & Sun 12noon-late

Real fire in winter.

Pleasant Beer Garden for warmer days

Darts, Dominoes, Pool.

Quiz Night First Sunday of the month,
8.30pm start

**Traditional Sunday Lunch 12-3pm,
served in the cosy dining room**

Easy access for disabled

Ample parking at the rear

B&B 2 Double, 2 Twin £30per person

The only pub in the village



GREENBANK HOTEL

**90 Greenbank Road
Darlington DL3 6EL**

*The Greenbank is a family run
hotel, conveniently located 5 min-
utes walk from the town centre and
Darlington Arts Centre.*

*We have 27 very comfortable bed-
rooms, a well stocked bar which
has on show military memorabilia.*

For further details

tel. 01325 462624

www.greenbank.co.uk

The Quakerhouse

2 Mechanics' Yard, Darlington



CAMRA

Town Pub of the Year 2010

9 CASK ALES ON TAP

Westons Old Rosie Cider

A selection of bottled ciders and perry

Fosters lager. Wines and spirits

www.quakerhouse.net

**LIVE MUSIC
EVERY WEDNESDAY**

December

1 st Graham Russell	8 th Last Minute
15 th Young Guns	22 nd Jiah
29 th Russ Tippins	

January

5 th Call of the Wild	12 th Sundance
19 th DVD	26 th The Besoms

February

2 nd The Rogues	9 th The Switch
16 th Chris Banderas	23 rd Spectrum

aQoustic

Live acoustic music
upstairs every Monday

Folk Night

with members of *Steam Radio*

4th Tuesday of month

Free entry

Nigel Picks Up The Bill

A MEMBER OF PARLIAMENT has agreed to take up a Private Member's Bill which could reform the way the planning system deals with threats to pubs and other local services.

Every year a small number of MPs, drawn from a ballot, are allowed to introduce a parliamentary bill on an subject of their choice.

This year, CAMRA persuaded Nigel Adams, MP for the Ribble Valley and a long-standing supporter of traditional pubs and beer, to adopt the Protection of Local Services (Planning) Bill (England).

If carried through into law, the Bill would give councils the power to ensure that local services - including community pubs - could not be demolished or changed into another use without first going through the planning process, including consulting local people.

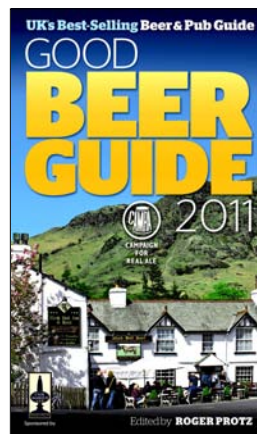
Developers would have to apply for planning permission before they could demolish, or change the use of, a defined local service.

Every week pubs, post offices, community centres, small shops and other local services are lost forever, with communities and councils powerless to act.

At present, 39 pubs a week are closing across the country. Some 12,000 independent shops shut in 2009. Whilst 2,500 post offices have been lost since 2007.

Local people are frequently unable to object as, unless a building is listed or is in a conservation area, permission to demolish is not required. Similarly, pubs can be converted into a range of commercial uses, such as a restaurant or betting shop, without needing permission.

The Independent Guide to Good British Beer and Pubs Brand New 38th Edition



CAMRA's top 4,500 real ale pubs. Unique breweries section listing all Britain's real ales. £15.99 from bookshops, or buy direct from CAMRA on (01727) 867201 www.camra.org.uk.

Residents are thus denied a say in the future of the areas in which they live.

Mr Evans will need the support of a great many other MPs if the Bill is to stand a chance of successfully passing through Parliament. So CAMRA and community organisations are asking as many people as possible to press their own local MPs to support it.

The first step is for constituents (that's you!) to encourage their MPs to sign Early Day Motion (EDM) 1009. The more people who ask an MP to do so, the more likely they are to support the Bill.

**Write to your MP at: [MP's name; Jenny Chapman in the case of Darlington town], House of Commons, London, SW1A 0AA.*



THE BRITANNIA INN

“A Bastion of Cask Beer for over 150 years”

- Good Beer Guide 2010

**Cameron's Strongarm,
John Smiths Cask,
Four Guest Ales**

Winner: Town Community Pub of the Year 2007 & 2008

Runner-up: Darlington Town Pub of the Year 2007 & 2008

Open: Mon - Wed 11.30-3 & 5.30-11; Thu - Sat 11.30-11; Sun 12-10.30

CHECK FOR CHRISTMAS/NEW YEAR HOURS

1 Archer Street (just off Bondgate), Darlington

Tel. 01325 463787

The CHEESE & WINE SHOP

**CHEESE
WINES
BEERS
HAMPERS**

**8 Clarks Yard
Darlington
County Durham
DL3 7QH**

**Telephone: 01325 384803
Email: ukcheeseandwine@talktalk.net
www.cheeseandwineshop.co.uk**



Petes Win Prizes

DARLINGTON CAMRA members don't just talk about good beer - some make it and sell it too. And pretty well, as a couple of recent presentations show.

Long-time committee member Pete Fenwick realised a lifetime ambition earlier in 2010 when he opened his very own commercial brewery, **Mithril Ales**, next to his home in Aldbrough St John. And it hasn't taken long for the 2.5 barrel plant to produce some award-winning brews.

Pete's 4.3% abv Flower Power was voted Beer of The Festival by drinkers at autumn's Darlington Rhythm 'n' Brews. Then the following month Route A66 (4%) was named runner-up at the Richmond beer festival. Pete is pictured (top) after receiving his Darlington award.

Local stockists of Mithril ales can be found listed on his blog on www.mithrilales.co.uk. Or call Pete on (01325) 374817 or (07889) 167128.

Meanwhile, for the sixth time in seven years, **Darlington Snooker Club** - run by current branch chairman Peter Everett and his mother Rita - has been chosen as North East real ale Club of the Year by judges from across the region's CAMRA branches. Peter (on right) is shown receiving the 'COTY' award from former national executive member John Holland. Give us a smile Peter!

***THE TEESDALE HOTEL**, in Middleton-in-Teesdale, was voted autumn Pub of the Season by Darlington CAMRA members. And well-deserved too - it's the first time the classy little hotel has won such a beer gong. The runner-up was the Red Lion at nearby Cotherstone, with a recent real ale convert, the Black Swan at Staindrop, in third place.



Photos by Ian Jackson

Hard Lines

MALCOLM Dunstone's *Hard Times?*, a tale of thrifty real ale drinking in Darlington town centre in the previous edition of DD posed a question at the end: "Detect a thread running through this?"

Here he announces the results - and the winner of the tasty prize.

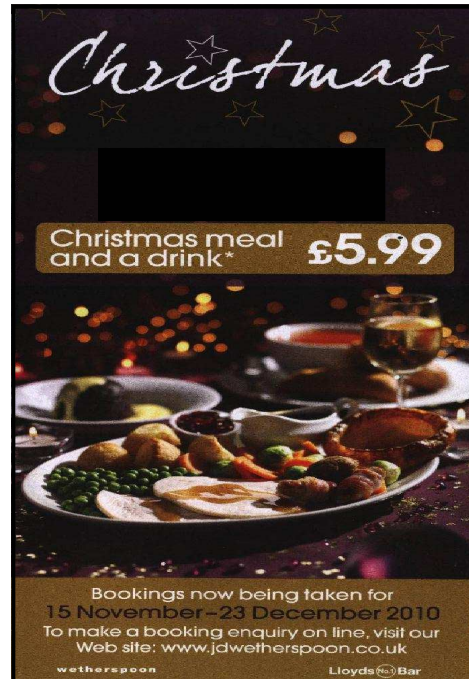
"The thread was - books written by Charles Dickens. The full list was *Hard Times*, *The Chimes*, *Great Expectations*, *Bleak House*, *Old Curiosity Shop*, *A Tale of Two Cities*, *Oliver Twist* and *A Christmas Carol*. I had several entries but only one that was correct. It was from Adrian Bell of Darlington, who will get his beer when I find him..."

no. 1 for real ales
wetherspoon

**Christmas
Meals
Available
Daily**

Booking not essential
but recommended.

Subject to availability



Cask Ales starting at just
£1.45 a pint
Selection of local and national guests

The Tanners Hall



**Skinnergate
Darlington
01325 369939**



Welbury's Duke Rides Again

THE DUKE of Wellington at Welbury, between Darlington and Northallerton, reopened at the end of October after more than a year in darkness - and a determined attempt to change it into a house.

And, yes, it is called the Duke again, not the Monks Table as it became when made 'restauranty' by the then-incoming owners, Mike and Carol Oldroyd, in 2007.

By September 2009 the couple decided the business wasn't working, closed it and applied for planning permission for conversion.

Objections from villagers - who live miles from any other pub - and the Darlington branch of CAMRA resulted, and Hambleton council refused the application.



A government planning inspector dismissed the Oldroyds' appeal this September, saying they had not "demonstrated a lack of need for the pub" and couldn't show that "proper attempts have been

made to sell at a reasonable price".

Andrew Ferriman and his wife Laura and mother Dorothy have now taken over. Their first decision was to revert to the traditional name and run the business first and foremost as a village pub. The Monks Table signs were ceremonially scrapped.

Some 60 people attended a meeting at the village hall at the beginning of October to hear Andrew's business plans and to respond to his request for preferences



*Fifty-six festivals.
Almost 200,000 pints.
More than 75,000 customers.
More than 2,000 small and medium-sized breweries launched or showcased.*

*Scores of start-ups from the North East and North Yorkshire.
Thousands of visitors from all over Britain.
Hundreds from abroad - Belgium, the USA, France, Austria...
Spending in local hotels and businesses.
Over £1,000 donated by customers to local charities in the past four years alone.
A social and cultural highlight.
A very Darlington celebration.
Are you ready to let all of this go?
Turn to pages 10-11.*

and ideas.

The village's own excellent website, www.welbury.com, said "the new management seems full of energy, enthusiasm and experience, and were warmly welcomed".

THE FIRST event to centre on the Duke, on its reopening day, was



the Hurworth Hunt. The Northern Echo reported a bigger than expected turnout, which the joint huntmaster said could have been helped by the reopening of the pub, where they stopped for refreshments: "We have met there for at least 60 years. We were made to feel very welcome". And the huntmaster's name? A Mr Fox. Ken Fox.

**Duke of Wellington, Welbury, N Yorks, DL6 2SG. Tel. (01609) 882464. Open from 4pm Mon-Thurs and from 12 noon Fri-Suns. Food available.*

Larger photo shows the Oldroyds unveiling the Monks Table in 2007

Arts Centre: Don't Let It Go

DARLINGTON COUNCIL has confirmed that the Spring Thing at Darlington Arts Centre, including the CAMRA-run beer festival, will take place in March.

But the longer-term prospects for the Vane Terrace facility - including the beer festivals it has hosted for 30 years - still look bleak.

Following severe government cuts, the council proposes halting its £1.2m a year subsidy for the town's Civic Theatre and Arts Centre. Officials acknowledge that that could lead to them closing.

The authority hopes to sell the Civic as a going concern but has been silent on sustaining the Arts Centre.

Some council figures are rumoured to have wanted to close the facility for a while, even though it attracts more than 171,000 visitors a year and supports a vast range of community activities.

The adjacent Queen Elizabeth Sixth Form College has previously shown an interest in expanding onto the site.

As we write, the council's proposals are out for consultation - but it has put forward no alternatives for the Arts Centre.



Arts Centre users, however, are not taking it lying down. A meeting attracted

more than 150 individuals and organisations and set up a group, Darlington for Culture, to put an alternative to the council. Their slogan: "We won't let it go".

They propose to set up a not-for-profit 'community interest company' to run the building, and continue to provide a hub

Is Beer Culture?

Well, aside from the promotion of the once-disappearing art of craft-brewing traditional British beer, every Arts Centre ale festival has been accompanied by live music, often

by local performers and thousands of drinkers have taken in exhibitions, etc, while in the building. And as Darlington for Culture says: "Darlington needs a meeting place for clubs and societies, for arts and recreation, for activities and enjoyment, for celebration and discovery, for new partnerships and creative ideas. That is what we mean by Culture..."



for the cultural activity.

Spokesman Paul Harman said running the Arts Centre on a reduced basis would still need £200,000 a year to cover the costs. The group would need to convince the council that it had a strong business model based on realistic charges and a combination of trading and fundraising.

Funds for the company would be raised by making shares available at £25 per organisation and £10 per individual.

A sub-group will work on a business plan to present to the council. Whether the council will find the proposal acceptable is another matter.

***SHOW your support by signing the online petition at www.gopetition.com/petition/40363.html**

56 Festivals: How Many More?

31 ANNUAL Beer and Music Festivals, starting in May 1980 with the *Traditional Jazz & Beer Festival*.

It had 17 different beers and was organised by the Arts Centre - in pre-Council ownership days - to raise money to create a foyer, theatre, ballroom and galleries.

In 1981 the event was switched to autumn. Local CAMRA members provided advice to organisers from formation of the Darlington branch in 1982.

By 1983 the Centre was being run by the Council, who continued to organise the 'Tradfest' with help from Darlington CAMRA.

In 1989, after sustaining a loss the previous year, the Arts Centre management handed over the beer side of the 10th festival to Darlington CAMRA amateurs. All 32 beers, including emergency supplies, ran out by 9.30pm on Saturday.

In 1995, the 16th edition was the first to be



promoted as the 'Rhythm 'n' Brews', the Arts Centre Rhythm and Blues Club now organising the music. Pint prices started at £1.20. Beer was still drawn straight from the casks, with primitive cooling by wet and sackcloths.

By 2009, all 56 cask ales were benefiting from CAMRA's state of the art cellarman-ship - in-cask cooling and handpull service. Another sell-out event.

25 SPRING THING beer festivals, to date. The festival within a festival - the annual folk festival organised by the Arts Centre Folk Club.

1986 saw the first Spring Thing and CAMRA were invited on board in 1987. A whole nine beers were se-creted away in the Garden Bar - *The Smallest Beer Festival in the World*.



Spring Thing Festival 2011



Darlington Arts Centre, March 2011

The 25th annual festival of folk song, music and dance, accompanied Thursday 17th - Saturday 19th

March by a festival of great real ales

Look forward to Spring with CAMRA's festival within the festival - over 50 real ales from some of Britain's best small breweries. **Entry to beer hall free.**

Folk festival organised by Arts Centre and Darlington Folk Club. Beers organised by Darlington CAMRA

tival in the World.

By 1987 it had become the *Small Beer Festival*, both to distinguish it from its big autumn brother and point to the focus now on micro-breweries. It had also long since moved into a larger space, the then Ballroom.

It took on the name of the overall *Spring Thing* festival in 1993, with the beer range having swollen to 23.

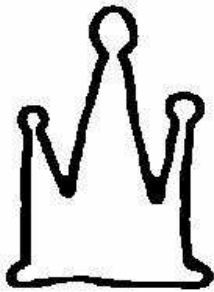
2006 saw the first festival cancellation, due to extensive building refurbishment works by the Council.

By 2010 the Spring

Thing beerfest - with free entry - was as well-stocked and busy as the autumn festival, with more than 50 real ales and loads of farm-house ciders.

And so to 2011. Make a date for March 17th-19th. We hope not for the last time.





The Crown Inn

Vicars Lane, Manfield
North Yorkshire DL2 2RF
Tel. 01325 374243

DECEMBER AND CHRISTMAS ACTIVITIES:

Fri Dec 3 - Open Mic Night

Christmas songs

Tue Dec 7 - Christmas Quiz

Play Your Cards Right Jackpot £90

Fri Dec 17 - Christmas Carols

complimentary mulled wine & mince pies

Thu Dec 23 - Christmas Draw

*In between Christmas and New Year food,
not Christmas food*

New Year's Eve Party

With The Blethermen, 6pm-late, tickets £5 (includes raffle)

FESTIVE PERIOD OPENING:

Christmas Eve 5-11.30

Boxing Day 12-11.30

28th/29th/30th Dec 5-11.30

New Year's Day 12-11.30

Christmas Day 12-2 & 8-10.30

Bank Holiday Mon 12-11.30

New Year's Eve Party 6-late

Sun 2nd Jan 12.11-30

Mon 3rd Jan back to normal

Darlington CAMRA Pub of the Year 2010

Village Brewer White Boar and Bull

plus up to six guest real ales

Twelve wines by the bottle or glass

Normal opening hours: Monday to Friday 5-11.30pm, Sat & Sun noon-11.30pm

Heated smoking shelter. The Crown is dog-friendly pub.

<http://crowninn.villagebrewer.co.uk>

Traveller's Travails Go On

NORTH YORKSHIRE villagers attempting to reopen their local pub, the Travellers Rest at Skeeby, near Scotch Corner, have withdrawn their offer to lease the building from property speculator Jon Whitfield.

The Skeeby Community Pub Society say Mr Whitfield "undermined the level of trust" they had sought to develop with him when, without ever disclosing his intentions to them, he bought the also-closed Skeeby Stores, with the intention of reopening it as a shop.

Running a small shop from the Travellers Rest was a key element of the group's business plan and had helped them secure grant funding from the Plunket Foundation.

They say Mr Whitfield had been aware of that for six months - yet the first they heard of his shop purchase was when they were contacted by the Darlington & Stockton Times.

The Society have, however, restated their offer to buy the pub outright, at a price "significantly in excess of a recent independent market valuation". Mr Whitfield is known to have bought it from S&N for no more than £150,000. The villagers' offer would net him a handsome profit, but he has so far held out for even more.

The Society say they have no objection to the reopening of Skeeby Stores but are not interested in leasing it themselves.

Spokeswoman Marie Church said: "We remain committed and determined to ensure that the Travellers Rest reopens as a pub and we will continue to endeavour to act in the best interests of the community".



THE TRAVELLERS REST, SKEEBY

The villagers want it open. They've organised themselves. They've offered to pay over the odds. There's a business plan in place. Yet still it's closed. To keep up to date, and lend your voice and cash, visit www.travellersrestskeeby.co.uk

A fine Selection of
Real Ales
available

Open All Day
Every Day
(closed winter Mons)



LANGDON BECK HOTEL FOREST-IN-TEESDALE

Featured in the Good Beer
Guide 2010

Food available:
Lunch 12-2pm
Dinner 7- 9pm
Accommodation
available from £40

On the B6277.
Middleton in
Teesdale, 7 miles.
High Force &
Cauldron Snout
waterfalls, 3 miles

Tel: 01833 622267
www.langdonbeckhotel.com

MERRY CHRISTMAS
from
THE TAPAS BAR
TO ALL OUR CUSTOMERS

Christmas Party Menus
Throughout December

Selection of Seasonal Ales Available

NEW YEAR'S EVE
BAR OPEN AS USUAL

Chris Moyles Loves Our Meatballs!
"To Die For"

Tapas Bar

The Old Yard, 98 Bondgate, Darlington
DL3 7JY (01325) 467385 www.tapasbar.co.uk
Email bookings to pete@tapasbar.fsnet.co.uk

Foresters Arms

Coatham Mundeville
Darlington

Tel. 01325 320565

**Probably the Best Pub in
the World**

Three Real Ales
Great Home-Cooked Food
Try It ... You Will Like It!

Special Offers Daily

"We thought the whole thing terrific"

- Mike Amos, Northern Echo

Good Beer Guide 2011

Closed Tuesdays

Number Twenty 2

Coniscliffe Road, Darlington

Traditional Ale House and Canteen

Darlington CAMRA Pub of the Year 2008

Campaigning on behalf of lovers of real ale

*Enjoy our superb range of up to Thirteen Real Ales plus Nine Continental Beers
on tap. Lunches and sandwiches served 12 till 2pm Monday to Saturday*

Tel. 01325 354 590

Karen, Sam and the Dragon

A MOTHER and daughter partnership is breathing new life into a once-comatose Dragon. And they've picked a 'Perfect' place.

Mum Karen Mitchelson has taken on the tenancy of the briefly-closed **George & Dragon** in Heighington with her daughter Samantha Spence. Their declared task: to build the attractive old pub into "a top-flight village hub-pub with a serious take on real ale, food, and a lively programme of events and entertainment".

Health service veteran Karen - 23 years with a Peterlee community hospital - decided on a life-changing switch of careers after breaking an ankle and being off work for 15 weeks. "My workmates thought I'd banged my head, not my foot!"

With husband David, she saw a chance to give Sam "the break she'd been working towards" after seven years in hospital-ity, in Durham and Hartlepool.

The area was an important consideration - and in 2006 Heighington was named BBC TV's *Perfect Village*.

The George's regular handpulled beers are Black Sheep and Wells Bombardier, with a guest beer changing twice a week.

Tim Cooper - 20 years at Durham's Ramside Hall - is the chef, and all fresh local produce his promise.

Mel Lewis of Shildon is charged with establishing the pub as a 'modern acoustic venue'. "We'll welcome players from the floor every first Friday in the month, as long as they offer quality, interesting music. Any genre, from any era", he says.

If all goes well Karen has the option to buy the Dragon's lease from Enterprise Inns in a couple of years.

**George & Dragon, East Green Heighington, DL5 6PP. Tel. (01325) 313152. Open for drinks daily from noon.*



NO DRAGON'S DEN.
A 'Perfect' spot on Heighington's East Green. And behind the pumps, Karen and Samantha.



T HE SURTEES Arms at Ferryhill Station has been named **North East Pub of the Year for 2010** by judges drawn from the region's five CAMRA branches.

Alan and Susan Hogg's street-corner local - which also happens to have a brewery in the back yard - will now compete in a 'super-regional' semi-final, with every chance of making it through to CAMRA's national final.

The couple took over in February 2007 and established their Yard of Ale Brewery the following year. Alan (pictured) said that the



current success was a bit of shock. "It was a massive boost. We've put so much work into this. The brewery seemed to get all the recognition at first, but it's great that the pub has got some too. We've had brilliant support from the local area. This is a real family business and we're fiercely independent. We've done very, very well since we've opened but the pub can't support the whole family yet."

Celebrity Snooker Night:
IAN McCULLOCH



At

At

Darlington Snooker Club
Saturday 22nd January

Tickets £15.00

Doors open 6.30pm

Full bar available including real ales from micro-breweries

-----oOo-----

Thursday 23rd December
Celebrate 11 Years
of Peter Everett and family at the Club
Buy a Pint - get a Half FREE!
Christmas Draw



Opposite the Odeon, above the motorbike showroom
Tel. 01325 241388 email: peterdsc@yahoo.co.uk

A Bevy with Nellie in Beverley

BEVERLEY in East Yorkshire is well worth a visit both for its attractions and its pubs, writes David Hill.

There is an excellent museum and gallery and the Guildhall (only open Fridays) is unique. Just south of the Wednesday Market the Minster can be found.

There is a range of pubs selling real ale both in the pedestrianised town centre and surrounding areas. One well known establishment is the White Horse Inn, locally known as **Nellie's** after a former landlady. It has changed little over many years, has a number of separate rooms and is still lit by gaslights. The only beer is Sam Smith's Old Brewery Bitter which although on cask breather was in excellent condition.

Nearby, the **Cornerhouse** has 12 hand-pumps with a constantly changing wide range of beers as well as an interesting menu.

The **Green Dragon** in the Saturday Market is a Nicholson's pub and has six guest beers. One of those on tap when we called in was Thornbridge Wild Swan, a 3.5% light hoppy bitter. As with other pubs in this chain it sells good value meals.

The final pub we visited in the town centre was the **Sun Inn**, which is opposite the Minster and has a couple of guest beers. One reason we didn't visit more pubs was that on midweek evenings many of the pubs have quizzes which attract a strong following and we got roped in to participate.

The quizzes ranged from light-hearted to serious, with the Sun having its own version of 'Deal or No Deal' as an added bonus. Now we have a good excuse to pay



BEVERLEY BEERS:
at The Cornerhouse
(above) and Nellie's
White Horse



another visit and sample the remaining pubs we didn't visit.

There is a full list and town map on the Hull & East Yorks CAMRA website www.hullcamra.org.uk. Very reasonable B&B can be found at the Trinity guest house opposite the railway station.

While we were in the area we called in at the **Marine Bar** on North Marine Drive in Bridlington. There was well kept Wold Top Bitter (3.5%), which we sampled in the outside area overlooking the sea. There is a 10% discount on real ale for card-carrying CAMRA members.

Ale Mail

THANKS TO Brian Dixon for his cycle round to survey outlets for bottle-conditioned beers (Bike & Bottle, DD179). One omission from the list is Titanic Stout (4.5% abv) from Titanic Brewery, which has been available in Morrisons for some time.

And just in the North West Yorks CAMRA branch area, Tesco at Catterick has Coniston Bluebird, and at The Station in Richmond the Richmond Brewery Company has started selling some of its beers bottle conditioned.

DAVID HILL, North Cowton



Top of the Hops

CAMRA has announced that there are now a staggering 767 breweries operating in Britain - that's four times the number than when the Campaign for Real Ale was founded in 1971.

The discerning drinkers' bible, the *Good Beer Guide 2011*, reports that 78 new breweries have opened over the past 12 months alone. Even allowing for closures, there's a net increase of 56.

The North East today boasts 21 real ale breweries and North Yorkshire 29.

The newest micro in the former is the **Windlestone** Brewery, at Stillington, while the year's newcomers in North Yorkshire include Darlington's own **Mithril Ales**, at Aldbrough St John, and Stokesley's second producer (in the footsteps of the established Captain Cook set-

up), the **Wainstone Brewery**.

Good Beer Guide editor Roger Protz says: "The real ale revolution goes on in spite of all the problems facing the brewing industry such as the often anti-competitive behaviour of the large pub companies, the heavy and continuing rise in tax on beer, grossly unfair competition from supermarkets, and the smoking ban in pubs.

"Against all the odds, craft breweries continue to sprout like mushrooms.

"The main reason is a simple one: craft brewers are responding to genuine consumer demand. Beer in pubs may be expensive compared to cheap supermarkets but drinkers are prepared to pay a bit extra for beer with taste and quality. More and more people want to think local and drink local and real ale meets that demand."

It takes all sorts to campaign for real ale

Join CAMRA today...

Complete the Direct Debit form below and you will receive three months membership free and a fantastic discount on your membership subscription. Alternatively you can send a cheque payable to CAMRA Ltd with your completed form, visit www.camra.org.uk or call 01727 867201. All forms should be addressed to Membership Secretary, CAMRA, 230 Hatfield Road, St Albans, AL1 4LW.

Your Details Applications will be processed within 21 days

Title Surname

Forename(s)

Date of Birth (dd/mm/yyyy)

Address

Postcode

Email address

Tel No (s)

Partner's Details (if Joint Membership)

Title Surname

Forename(s)

Date of Birth (dd/mm/yyyy)

Please state which CAMRA newsletter you found this form in? Direct Debit Non DD

Single Membership (UK & EU) £20 ☐ £22 ☐

Joint Membership (Partner at the same address) £25 ☐ £27 ☐

For Young Member and concessionary rates please visit www.camra.org.uk or call 01727 867201.

I wish to join the Campaign for Real Ale, and agree to abide by the Memorandum and Articles of Association.

I enclose a cheque for Mem Form 0108

Signed Date

2.0 Instruction to your Bank or Building Society to pay by Direct Debit

Please fill in the form and send to:
Campaign for Real Ale Ltd.
230 Hatfield Road, St Albans, Herts AL1 4LW

Name and full postal address of your Bank or Building Society

To the Manager Bank or Building Society

Address

Postcode

Name(s) of Account Holder

Bank or Building Society Account Number **Branch Sort Code**

Reference Number

Originators Identification Number **9 2 6 1 2 9**

FOR CAMRA OFFICIAL USE ONLY This is not part of the instruction to your Bank or Building Society

Membership Number

Name Postcode

Instructions to your Bank or Building Society

Please pay CAMRA Direct Debits from the account detailed on this instruction subject to the safeguards assured by the Direct Debit Guarantee. I understand that this instruction may remain with CAMRA and, if so will be passed electronically to my Bank/Building Society.

Signature(s) Date

Banks and Building Societies may not accept Direct Debit Instructions for some types of account.

The Direct Debit Guarantee

This Guarantee should be detached and retained by the payer.

• This Guarantee is offered by all Banks and Building Societies that take part in the Direct Debit Scheme. The efficiency and security of the Scheme is monitored and protected by your own Bank or Building Society.

• If the amounts to be paid or the payment dates change CAMRA will notify you 10 working days in advance of your account being debited or as otherwise agreed.

• If an error is made by CAMRA or your Bank or Building Society, you are guaranteed a full and immediate refund from your branch of the amount paid.

• You can cancel a Direct Debit at any time by writing to your Bank or Building Society. Please also send a copy of your letter to us.

The Black Swan

Staindrop



Three Real Ales Now on Sale:
Timothy Taylor's,
Black Sheep PLUS A Guest Ale

Good traditional food served 7 days a week
Two steaks plus a bottle of wine £16.00

Traditional Sunday roast:
main meal £6.95
two courses £8.95
three courses £10.95

A Warm Welcome Awaits All!



The Black Swan
40 Front Street, Staindrop
Co Durham DL2 3NH
(01833) 660749



The Buck Inn

Thornton Watlass, Bedale



COUNTRY INN OVERLOOKING THE VILLAGE GREEN

*Five real ales always on pump,
including local independents*
Quality home-cooked meals, lunch and
evening 7 days a week. Bar open all day

BEER GARDEN - CHILDREN'S PLAY AREA -
EN-SUITE ACCOMMODATION - FUNCTION ROOM

Sunday lunchtime jazz:

Dec 12 Frisco Bay Hot Stompers, Dec 19
New Red Onion Jazz Babies, Jan 9 Tees
Valley Jazzmen, Jan 16 Harriers Jazz Band,
Jan 30 Mississippi Dreamboats

Tel. Bedale 01677 422461

www.thebuckinn.net

BREWS, NEWS AND VIEWS

SEASONS 'cafe and kitchen' has opened in the former Old Dun Cow, in Darlington's Post House Wynd. It serves two real ales, Richmond Brewery's Richmond Station Ale (£3.20 a pint) and Black Sheep Bitter. The pub had been vacant for some time after being sold by Punch Taverns in 2009. A 'to let' board bearing the phone number of Darlington letting agents later appeared. Seasons' proprietors Ian Woodcock and Jane Gallogly have spent £150,000 on refurbishment and have a restaurant of the same name in the converted Richmond Station, where Richmond Brewery is also based.

THE BLACKWELL GRANGE HOTEL, on the leafy southern edge of Darlington, is also now selling Black Sheep Bitter.

THE BAY HORSE at Middleton Tyas ('bottom house') looks unlikely ever to re-open, following Richmondshire Council's decision to grant planning permission for conversion into three dwellings and the building of a fourth in its car park.

DIARY DATES - DARLINGTON CAMRA - DIARY DATES

- Fri 3 Dec** - **Rural coach crawl** around Heighington area. Depart Feethams (opp. Town Hall) 7pm. Details: Pete Fenwick (01325) 374817; (07889) 167128.
- Tues 7 Dec** - **Quaker House**, Mechanics' Yard (upstairs). Darlington CAMRA branch meeting, 7.30pm. All welcome.
- Wed 29 Dec** - **Darlington CAMRA Christmas Social**, 7.30pm, D'ton Snooker Club, cnr. Northgate/Corporation Rd (ring bell). Pint & buffet for members, quiz. Bring guests, great night.
- Tues 11 Jan** - **Glittering Star**, Stonebridge. D'ton CAMRA branch meeting, 7.30pm.
- Fri 14 Jan** - **Rural coach crawl** around North Yorks pubs, 7pm. Details via Pete, above.
- Sat 5 Feb** - **North East CAMRA Regional Meeting**, 1pm. All local members welcome. Venue to be confirmed - contact John Magson (01642) 891826.
- Thu-Sat, 17-19 March** - **Darlington Spring Thing 2010**, Darlington Arts Centre, Vane Terrace. Free admission to all five sessions of the CAMRA-organised beer festival.

Darlington Drinker is published by the Darlington branch of CAMRA, the Campaign for Real Ale. Circulation 3,500. News, articles and letters welcome. All items © Darlington CAMRA but may be reproduced if source acknowledged. Editor: Brendan Boyle, 6 Clareville Road, Darlington DL3 8NG; (01325) 362092; email dd@idnet.com. Additional contributors this issue: Malcolm Dunstone, Pete Fenwick, David Hill, Ian Jackson. Advertising: Peter Everett (01325) 241388. Ad rates a snip at quarter-page £30, half page £50, full page £80; sixth consecutive insertion free. Branch website: www.darlocamra.org.uk. For colour PDF versions of Darlington Drinker see www.adrianbell.co.uk. CAMRA HQ is at 230 Hatfield Road, St Albans, Herts AL1 4LW; (01727) 867201; see www.camra.org.uk for all other real ale information.

Printed by Marford Lithographic, Darlington (01325) 358456